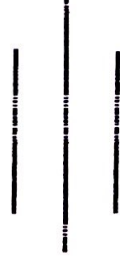


सोलुदुधकुण्ड नगरपालिकाको बिभिन्न वडा हरुमा नुम्बुर नेट प्रा. लि द्वारा बिस्तार गरिएको ईन्टरनेट सेवाको छोटो प्रतिवेदन



प्रतिवेदन

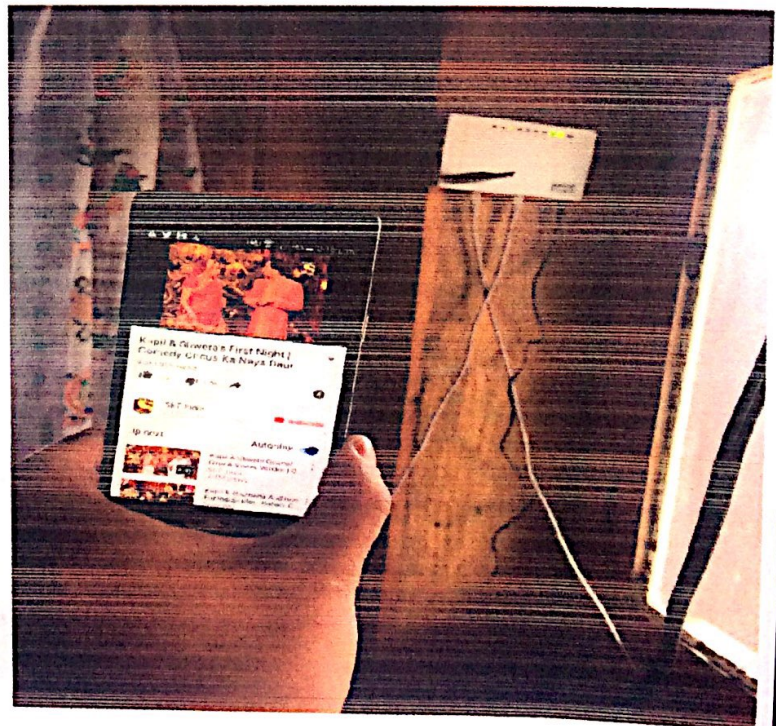
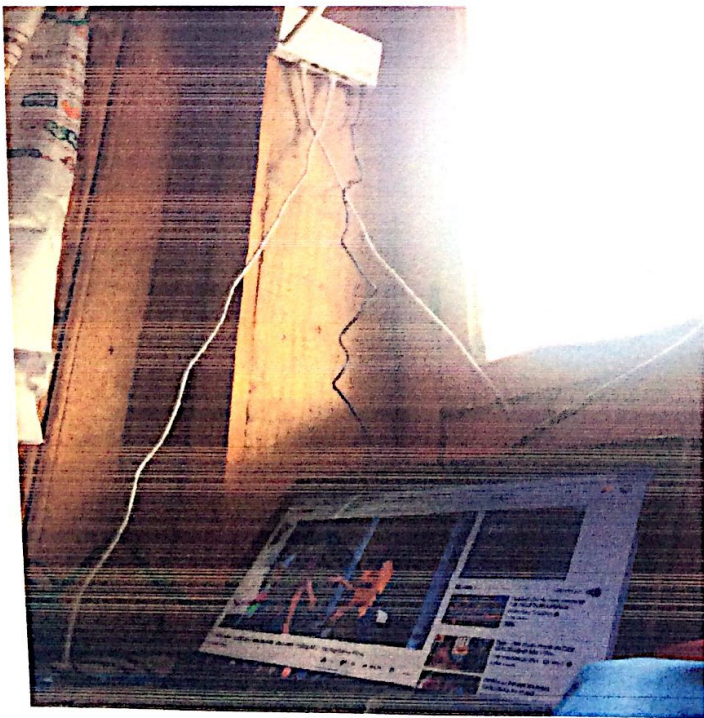


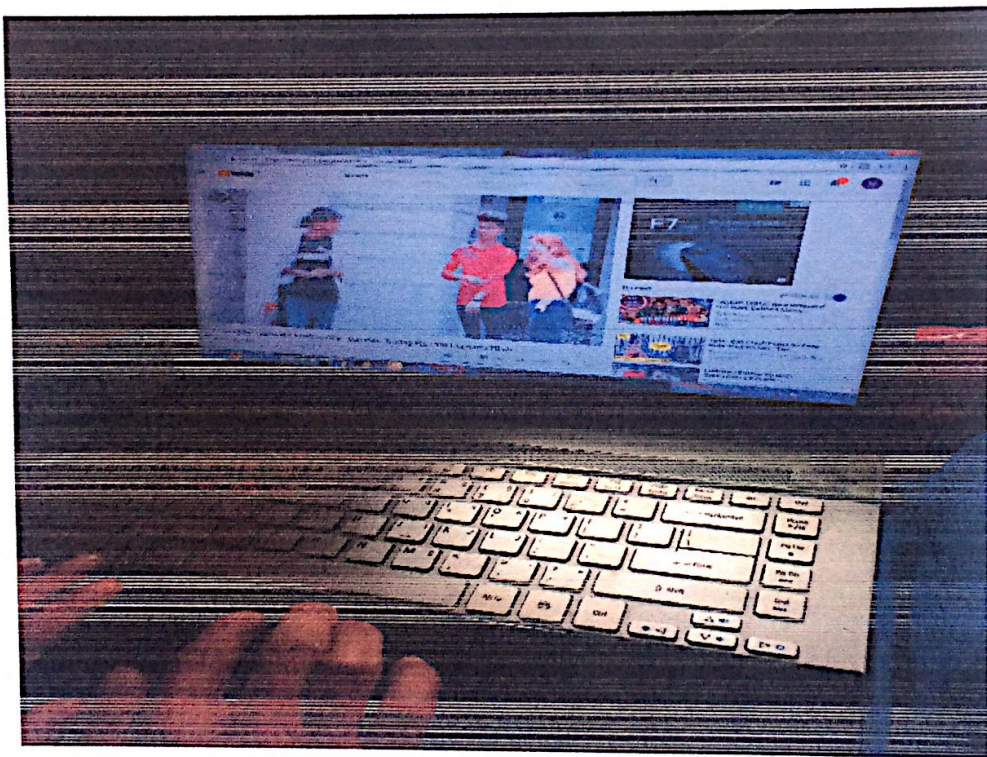
सोलुदुधकुण्ड नगरपालिका
सल्लेरी- ५ , सोलुखुम्बु, प्रदेश -१ , नेपाल

विस्तृत विवरण :

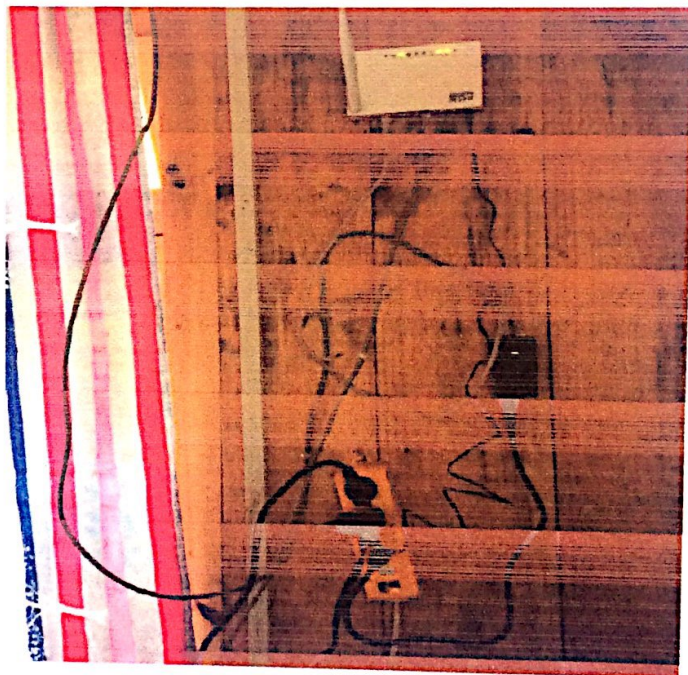
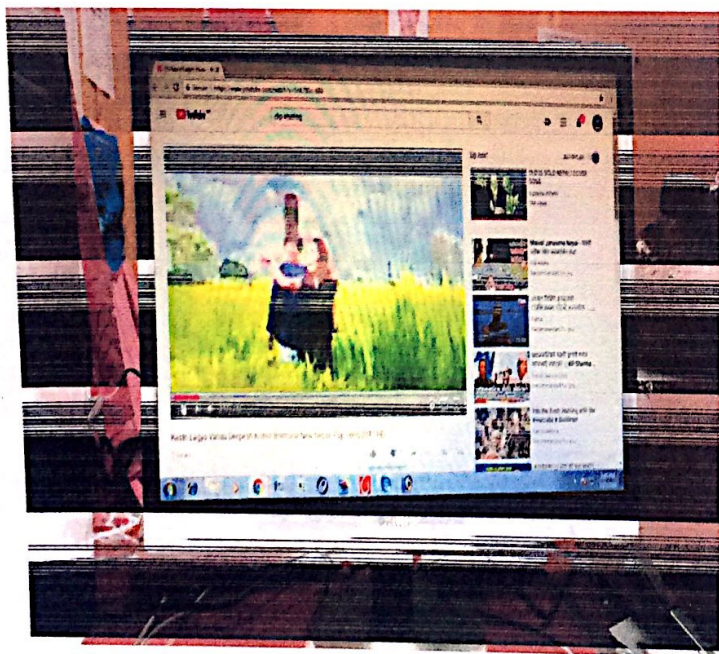
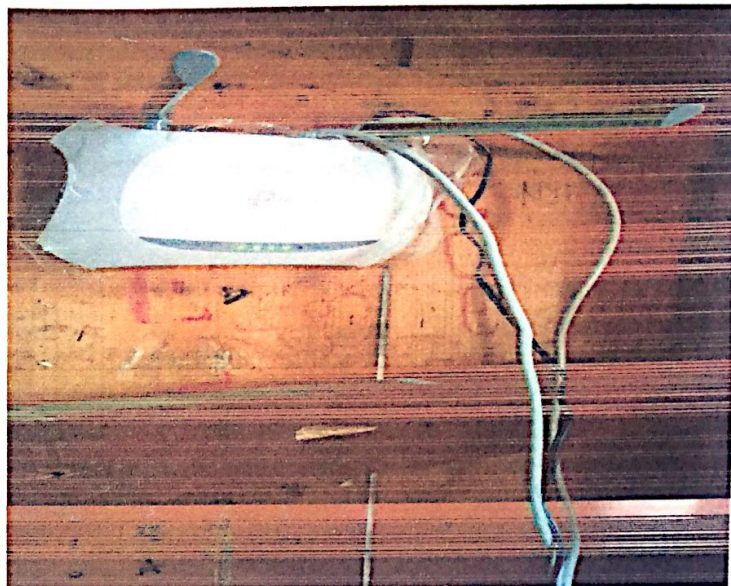
यस सोलुदुधकुण्ड नगरपालिकाका ६ वटा वडा हरुमा नुम्बुर नेट प्रा. लि. द्वारा विस्तार गरिएको इन्टरनेट सञ्जालहरुको सेवा स्थिति बुझ्नको लागि मिति २०७५-०२-०२ मा गरिएको अनुगमनको क्रममा प्राप्त गरिएको जानकारीहरु यस प्रकार रहेको छ ।

सोलुदुधकुण्ड नगरपालिका - ६ , दोर्पु





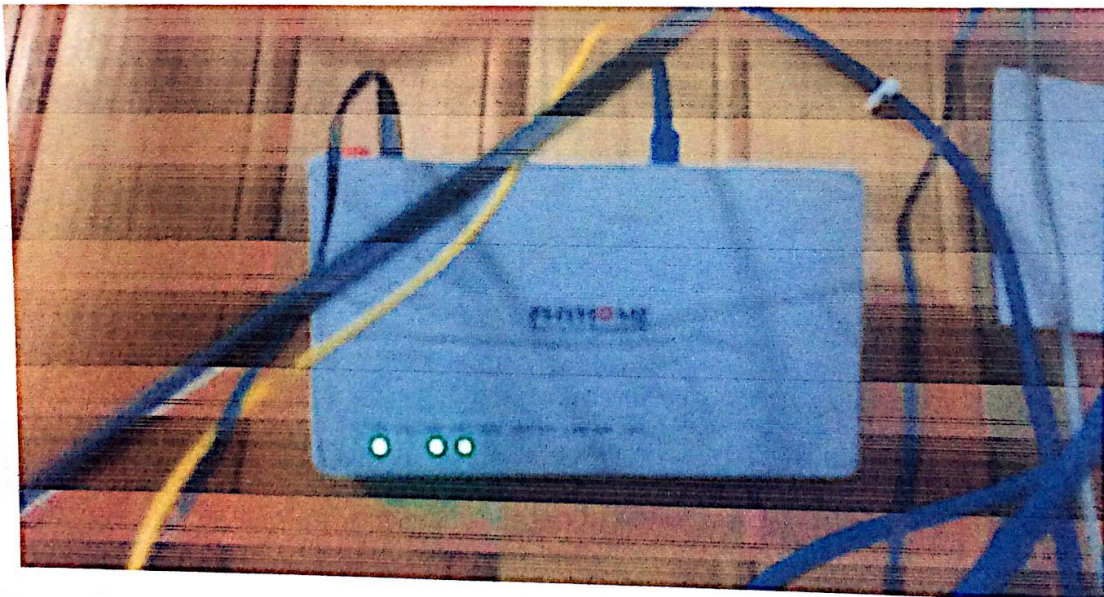
सोलुदुधकुण्ड नगरपालिका - ७, गामाँ



सोलुदुधकुण्ड नगरपालिका - १, टाक्सिन्दु

The screenshot shows a network monitoring application with several tabs: General, Advanced, Statistics, Traffic, Total, and Total Statistics. The 'Statistics' tab is active, displaying 'Target Upload' and 'Target Download' fields. Below these are two graphs: 'Upload: Cbps' and 'Download: Cbps', and another set of graphs for 'Upload Packets: C/p/s' and 'Download Packets: C/p/s'. A command prompt window is open in the foreground, showing the execution of a ping command: 'ping -n 1 -l 100 64.100.17'. The output shows 'Packets: Sent = 1, Received = 1, Lost = 0 (0%)' and 'Approximate round trip times in milliseconds: Minimum = 0ms, Maximum = 0ms, Average = 0ms'.

The screenshot shows the homepage of the Solu Dudh Kundamun Municipality website. The URL in the browser address bar is 'solududhkundamun.gov.np'. The page features the national emblem of Nepal at the top, followed by the text 'सोलुदुधकुण्ड नगरपालिका' (Solu Dudh Kundamun Municipality) and 'सन्सन्नेरी ४, सोलुखुम्बु, प्रचिन १, नेपाल, सारकण्ड' (Sunsuneri 4, Solukhumbu, Prachin 1, Nepal, Sarkanda). There are language selection options for 'English' and 'नेपाली' (Nepali), along with social media icons for Facebook and Twitter. A search bar and a 'Main menu' dropdown are also visible. Below the header, there is a section titled 'स्वागतमा स्वागत' (Welcome) and a photograph of a building.

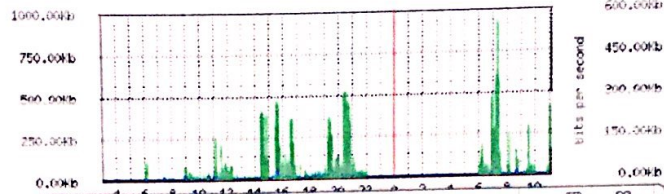


सोलु दु.न.पा. -४

Queue <dudhkunda_wada5> Statistics

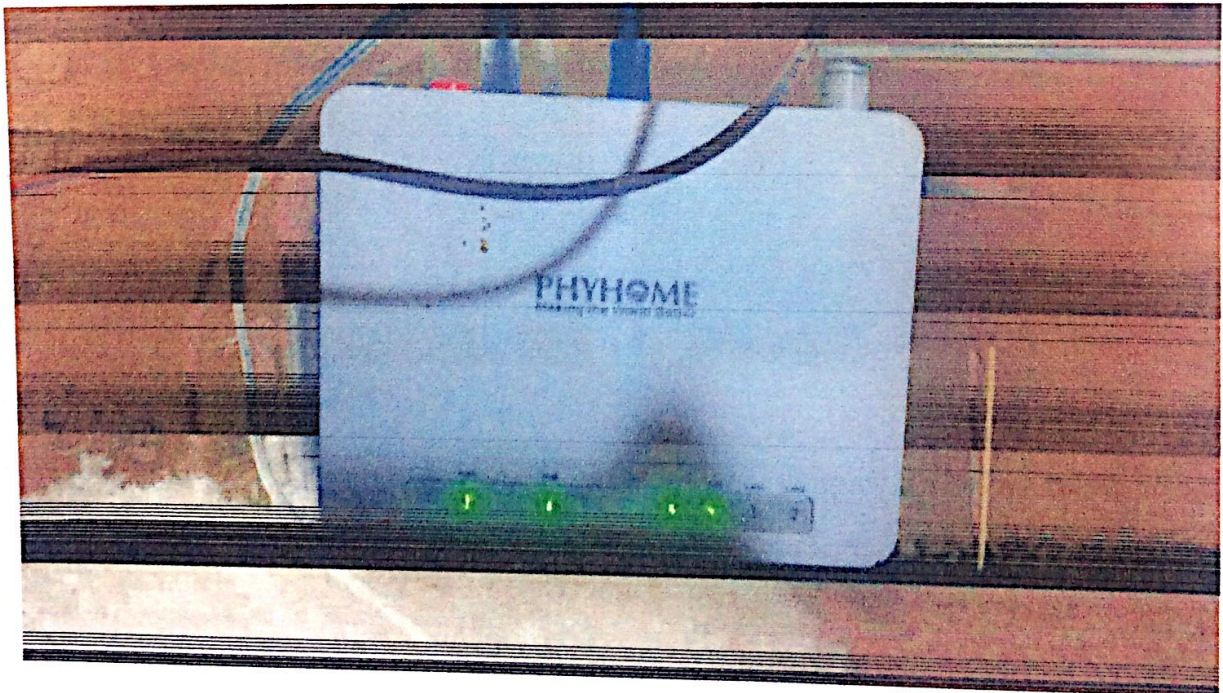
- Source-addresses: 100.64.100.18
- Destination address: 11/0
- Max-limit: 1000.00Kb/1000.00Kb (Total: unlimited)
- Limit-at: un/limited/un/limited (Total: unlimited)
- Last update: Thu Jul 19 10:59:11 2018

"Daily" Graph (5 Minute Average)



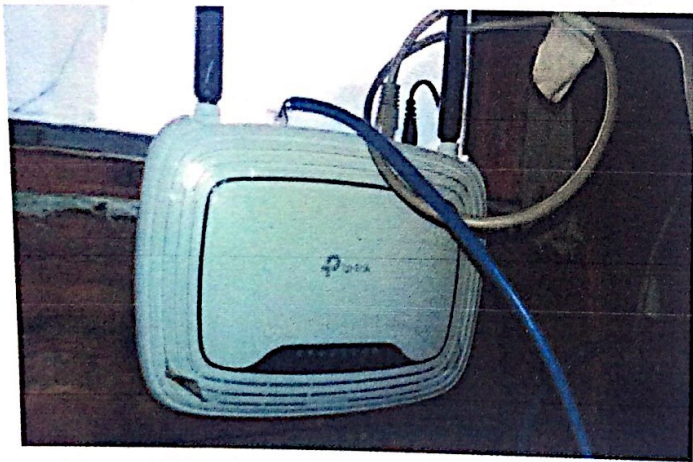
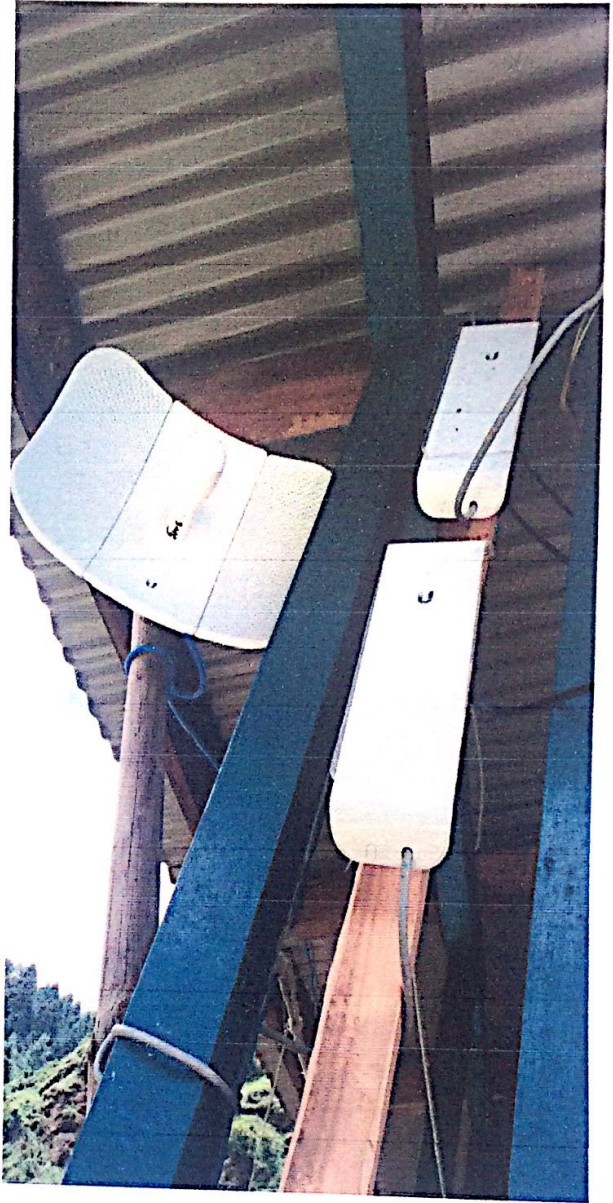
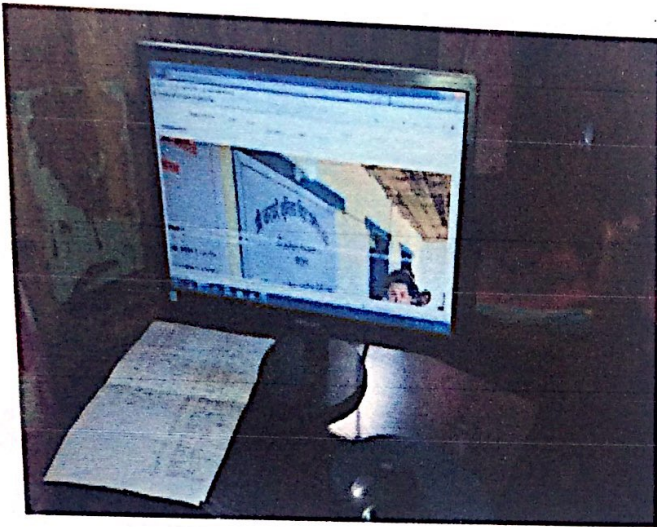
```
C:\Windows\system32\cmd.exe
C:\Users\user> ping 100.64.100.18 -n 4 -l 32 -w 2000
Pinging 100.64.100.18 with 32 bytes of data:
Reply from 100.64.100.18: bytes=32 time<1ms TTL=64
Reply from 100.64.100.18: bytes=32 time<2ms TTL=64
Reply from 100.64.100.18: bytes=32 time<1ms TTL=64
Reply from 100.64.100.18: bytes=32 time<1ms TTL=64

Statistics for 100.64.100.18:
    Packets: Sent = 4, Received = 4, Lost = 0 (0% loss),
    Minimum = 0ms, Maximum = 2ms, Average = 1ms
C:\Users\user>
```



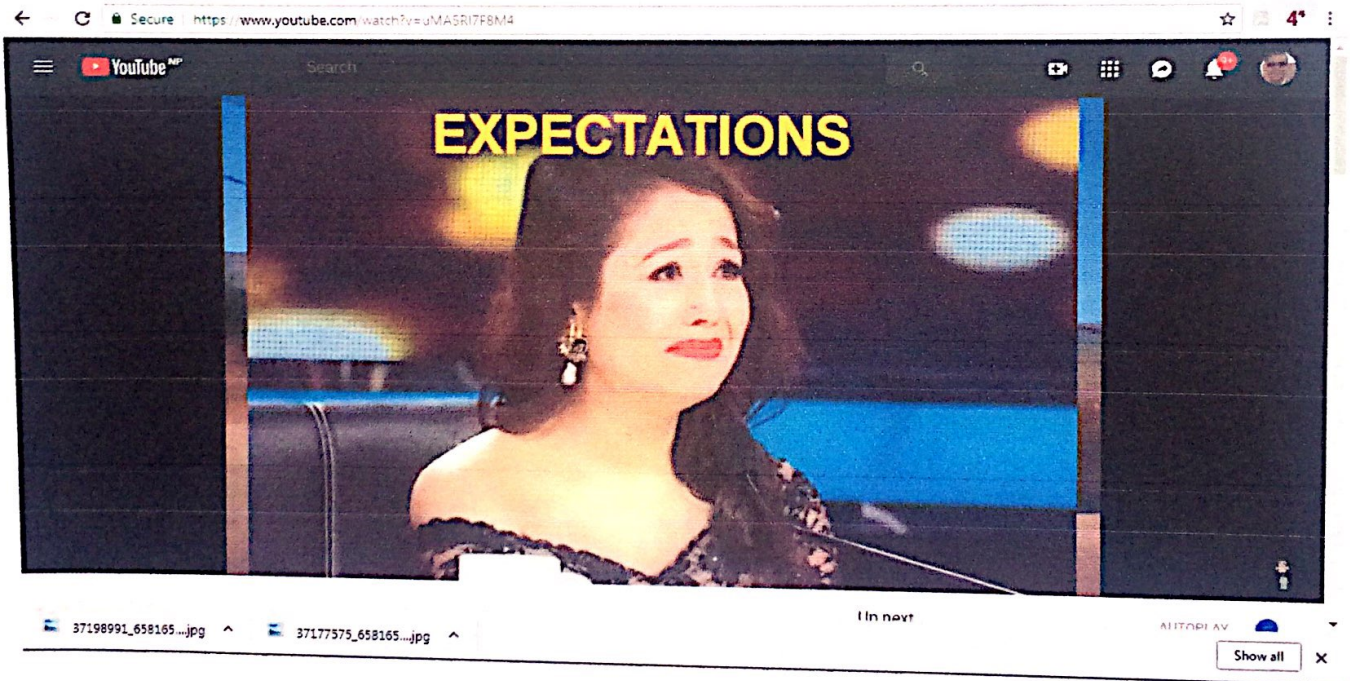
सोलु दुन पा -५

fiber connection.



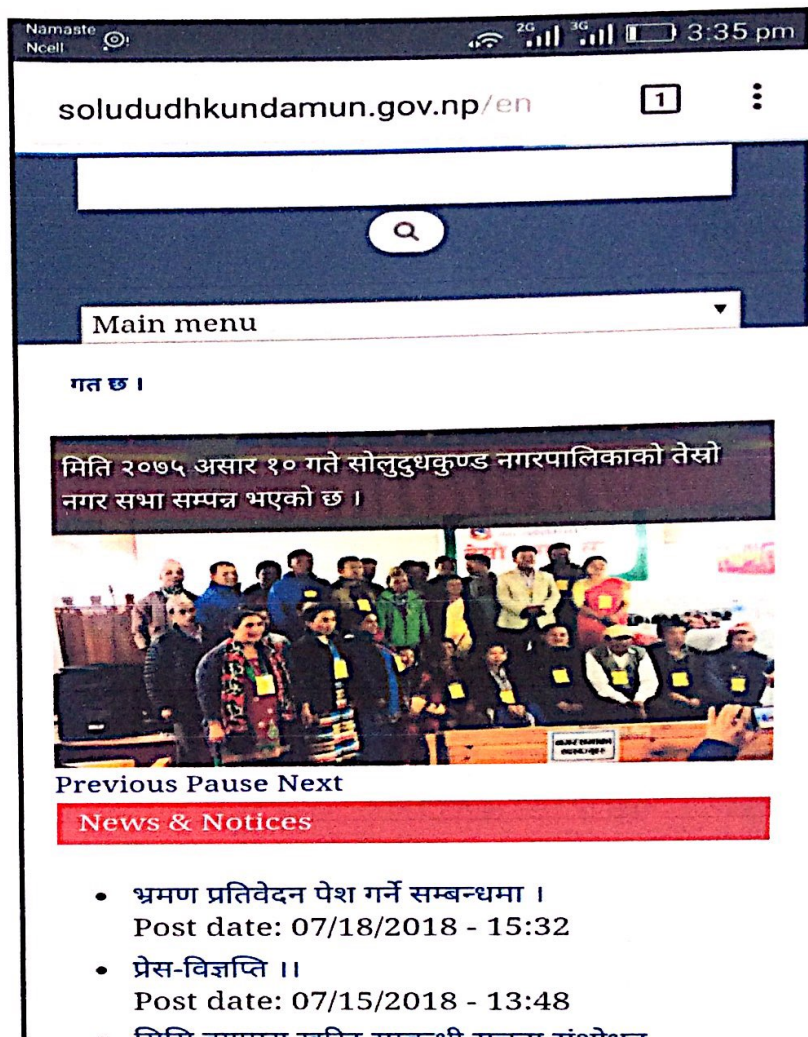
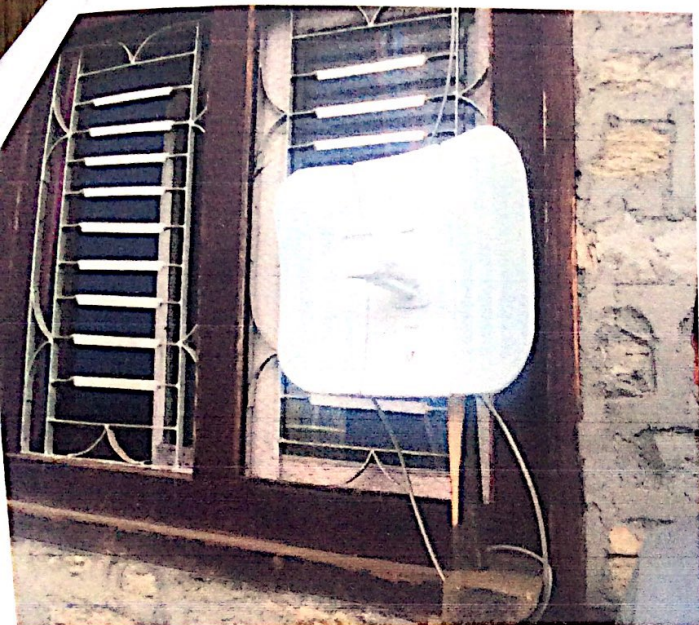
Wireless Connection

सोलु दु.न.पा. - ३ तामाखानी



Wireless Connection

सोलुदुधकुण्ड नगरपालिका - ११, तिङ्ला



Wireless Connection

सोलु दु.न.पा. -२ बेनी